

01 Location Plan

# St. Leo's Catholic College Wahroonga

## Staged Development Application - Masterplan

### Drawing List

DA001B	Cover Sheet & Site/ Roof Plan
DA002A	Site Analysis
DA003A	Site Demolition Plan
DA004A	Notification Plans
DA101B	Site Plan - Level 1
DA102B	Site Plan - Level 3
DA103B	Site Plan - Level 4
DA104B	Site Plan - Level 5
DA105B	Site Plan - Level 6
DA201A	Site Sections & Elevations
DA301A	Shadow Analysis

### Architect

**pmdl**  
 Sydney Suite 801, 28 Clarke Street, Crows Nest NSW 2065  
 Phone + 61 2 84585600 Email: sydney@pmdl.com.au  
 Melbourne Level 3, 479 St Kilda Road, Melbourne Victoria 3004  
 Phone + 61 3 94278885 Email: melbourne@pmdl.com.au  
 Hong Kong 20/F, Hollywood Centre, 233 Hollywood Road, Sheung Wan Hong Kong  
 Phone + 85 2 28360992 Email: hongkong@pmdl.com.au

### Landscape Architect

**Arterra Design Pty Ltd**  
 Suite 602, 51 Rawson Street Epping NSW 2121  
 Phone + 61 2 9957 2466 Email: dosborne@arterra.com.au

### Quantity Surveyor

**Bay Partnership**  
 Suite 403, 460 Pacific Highway St Leonards NSW 2065  
 Phone + 61 2 9901 4878 Email: ad@baypartnership.com.au

### Traffic Consultant

**Brown Consulting (NSW) Pty Ltd**  
 Level 2, 2 Burbank Place, Norwest Business Park Baulkham Hills NSW 2153  
 Phone + 61 2 8838 5000 Email: dean.broderick@brownconsulting.com.au

### Environmental Consultant

**Molino Stewart Pty Ltd**  
 29 Cowper Street Parramatta CBD NSW 2124  
 Phone + 61 2 9354 0300 Email: chell@molinstewart.com.au

### Hydraulic Engineer

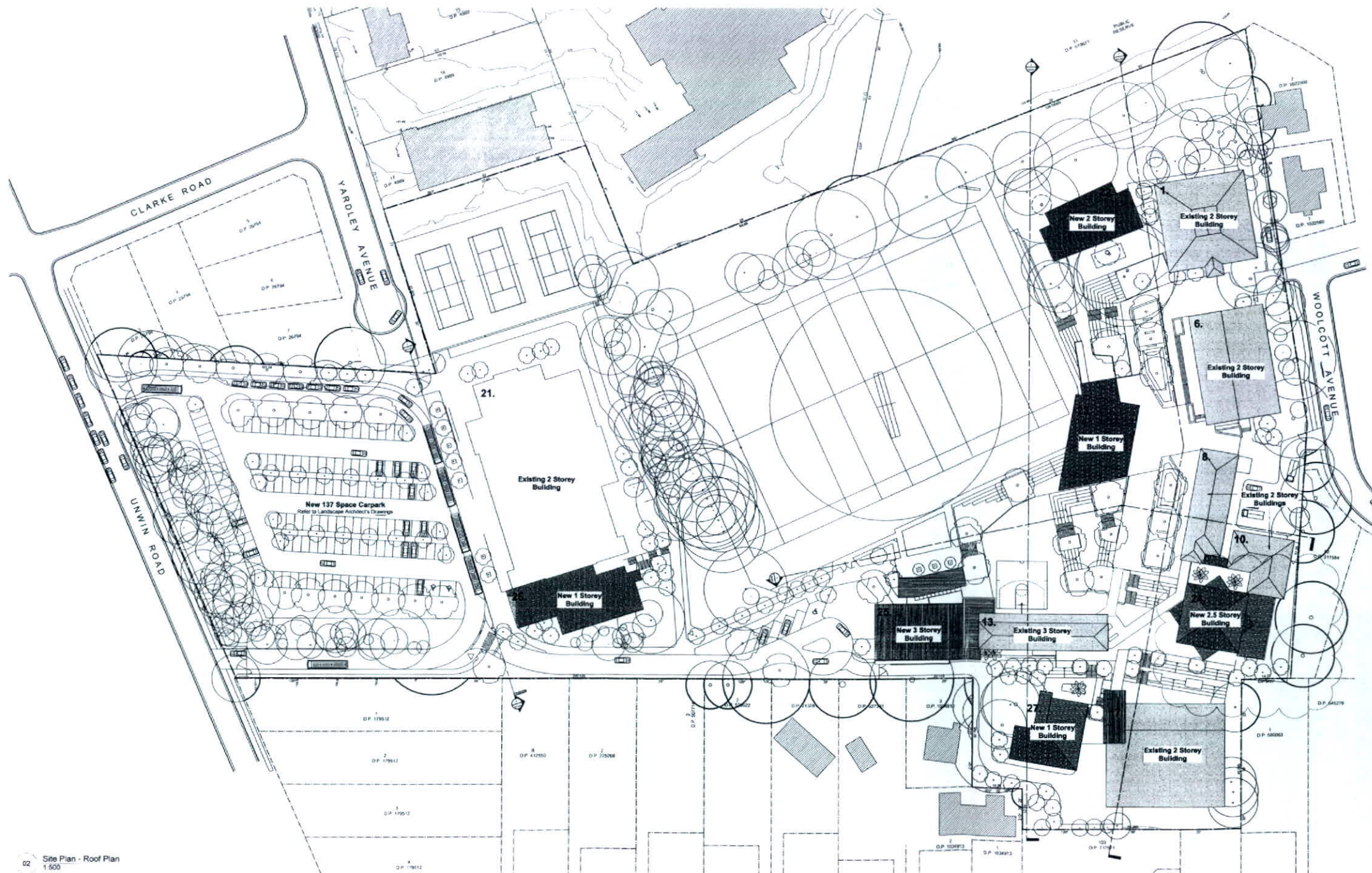
**Siteplus**  
 2A Thomas Street Wollongong NSW 2520  
 Phone + 61 2 4227 4233 Email: kens@siteplus.com.au

### Electrical Engineer

**JHA Consulting**  
 Suite 3.07, 29-31 Lexington Drive Norwest Business Park Bella Vista NSW 2153  
 Phone + 61 2 9437 1000 Email: allen.lam@jhaengineers.com.au

### Access Consultant

**Accessibility Solutions**  
 20 Begonia Street Pyrmont NSW 2009  
 Phone + 61 2 9695 1940 Email: mark@accesssolutions.com.au



### Building Legend

1. Music/Fitness Centre (formerly Library)
2. Demountable (removed)
3. Demountable (removed)
4. Demountable (removed)
5. Administration (demolished)
6. Science Block
7. Waste Collection (formerly Male WC)
8. Block A - Canteen
9. Chapel (demolished)
10. Block B - GLAs
11. Female WC/ Locker (demolished)
12. Demountable (removed)
13. Block C - GLAs
14. Art Demountable (removed)
15. Art Demountable (removed)
16. Sport Store (demolished)
17. Br. Brian Berg Hall - TAS
18. Music (demolished)
19. Music Demountable (removed)
20. Demountable (removed)
21. Multi Purpose Hall
22. GLA Building
23. Chapel
24. Library
25. Administration
26. Trade Training Centre
27. Visual Arts Building

02 Site Plan - Roof Plan  
1:500

C 15/01/12 Approved DA - Library Increased Details  
 B 21/01/12 Approved DA - 141, 154, 155, 156, 157 & 158 retained  
 A 27/01/12 Retained DA  
 15/01/12  
 15/01/12  
 15/01/12

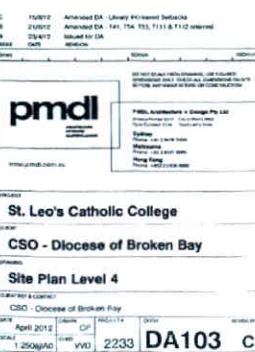
**pmdl**  
 Sydney Suite 801, 28 Clarke Street, Crows Nest NSW 2065  
 Phone + 61 2 84585600 Email: sydney@pmdl.com.au

**St. Leo's Catholic College**  
 CSO - Diocese of Broken Bay  
 Site Plan - Roof Plan  
 18 Woodcote Ave Wahroonga NSW 2076  
 April 2012  
 1:500/500  
 VWD 2233 DA001 c

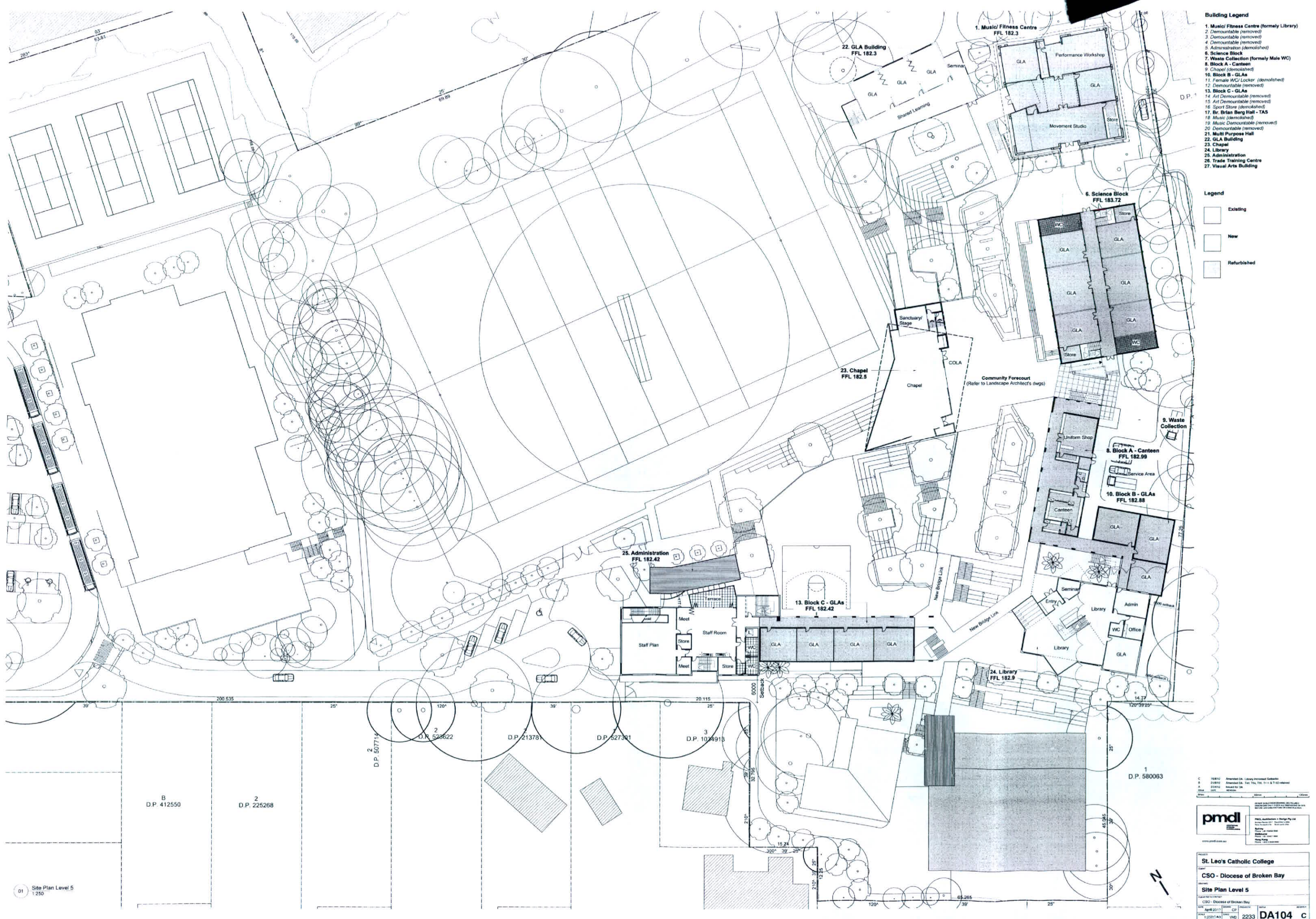




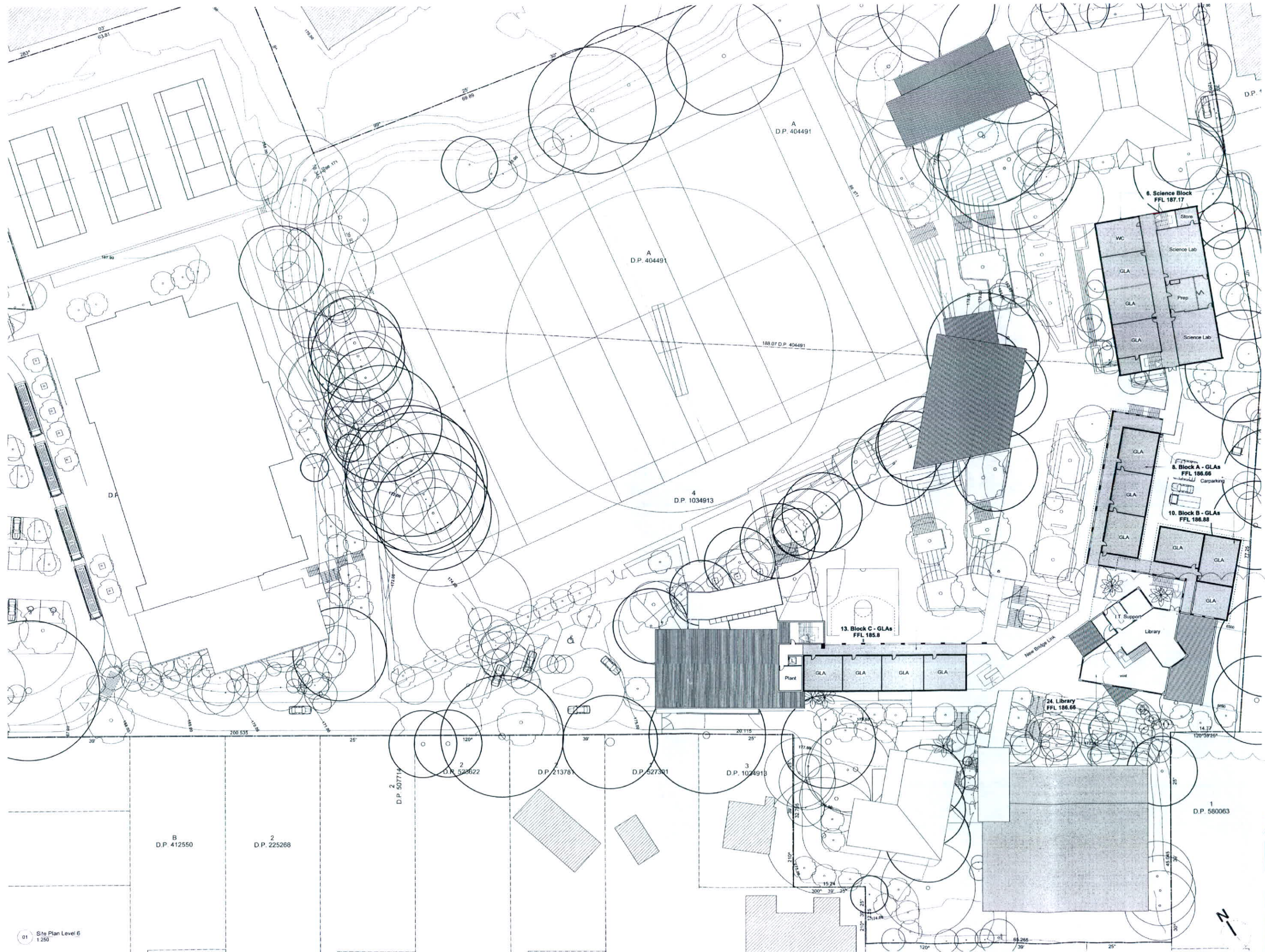








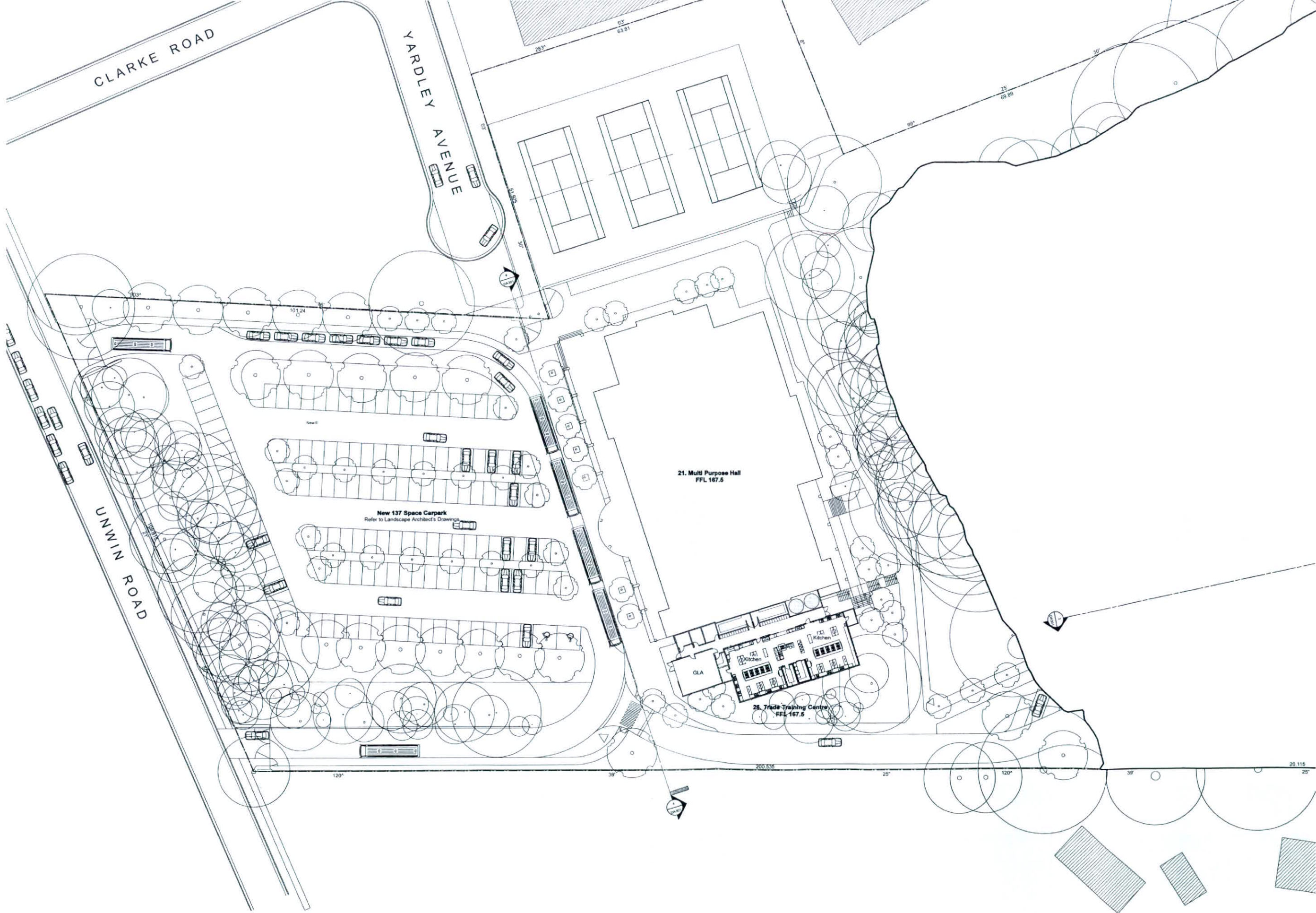




- Building Legend**
- 1. Music/Fitness Centre (formerly Library)
  - 2. Demountable (removed)
  - 3. Demountable (removed)
  - 4. Demountable (removed)
  - 5. Administration (demolished)
  - 6. Science Block
  - 7. Waste Collection (formerly Male WC)
  - 8. Block A - Canteen
  - 9. Chapel (demolished)
  - 10. Block B - GLAs
  - 11. Female WC/Locker (demolished)
  - 12. Demountable (removed)
  - 13. Block C - GLAs
  - 14. Art Demountable (removed)
  - 15. Art Demountable (removed)
  - 16. Sport Store (demolished)
  - 17. Br. Brian Berg Hall - TAS
  - 18. Music (demolished)
  - 19. Music Demountable (removed)
  - 20. Demountable (removed)
  - 21. Multi Purpose Hall
  - 22. GLA Building
  - 23. Chapel
  - 24. Library
  - 25. Administration
  - 26. Trade Training Centre
  - 27. Visual Arts Building

- Legend**
- Existing
  - New
  - Refurbished





- Building Legend**
- 1. Music/Fitness Centre (formerly Library)
  - 2. Demountable (removed)
  - 3. Demountable (removed)
  - 4. Demountable (removed)
  - 5. Administration (demolished)
  - 6. Science Block
  - 7. Waste Collection (formerly Male WC)
  - 8. Block A - Canteen
  - 9. Chapel (demolished)
  - 10. Block B - GLAs
  - 11. Female WC/Locker (demolished)
  - 12. Demountable (removed)
  - 13. Block C - GLAs
  - 14. Art Demountable (removed)
  - 15. Art Demountable (removed)
  - 16. Sport Store (demolished)
  - 17. St. Brian Bagg Hall - TAS
  - 18. Music (demolished)
  - 19. Music Demountable (removed)
  - 20. Demountable (removed)
  - 21. Multi Purpose Hall
  - 22. GLA Building
  - 23. Chapel
  - 24. Library
  - 25. Administration
  - 26. Trade Training Centre
  - 27. Visual Arts Building

- Legend**
- Existing
  - New
  - Refurbished

01 21/01/2012 Approved (L.A.) - Details, site planning, landscape & landscape presented

02 22/01/2012 Approved by DA

03 22/01/2012 Approved

04 22/01/2012 Approved

pmcl

Project: St. Leo's Catholic College  
Client: CSO - Diocese of Broken Bay  
Drawing: Site Plan Level 1  
Drawing No: 2233  
Drawing Date: 22/01/2012

St. Leo's Catholic College

CSO - Diocese of Broken Bay

Site Plan Level 1

CSO - Diocese of Broken Bay

22/01/2012 CP

22/01/2012 VPD 2233 DA101 B



# VEHICULAR CIRCULATION

A new entry is proposed from Unwin Road to provide a one way loop system into and out of the site for buses and kiss and ride drops offs. This simplifies the vehicle circulation within the school grounds and frees the surrounding streets from these activities and movements. Pedestrian movement is defined and safer with minimal crossings and conflicts with vehicles. It also integrates and ties the new multipurpose hall into the site facilities. A significant signage wall is proposed at the new entry to clearly demarcate it as the main school entry.

# CAR PARK

Car parking is provided close to the entry and the hall to cater for students and staff. It also caters for after hours hall users. Swales and permeable paving within the car park cater for stormwater detention and treatment and passively irrigates the proposed shade tree planting.

# SYDNEY BLUE GUM PLANTING

Sydney Blue Gum and understory screen planting along the northern boundary to the car park and in the planting area immediately to the south. Screening to provide privacy to residents to the north of the car park. Species to be selected from the Blue Gum High Forest Community.

# ENTRIES

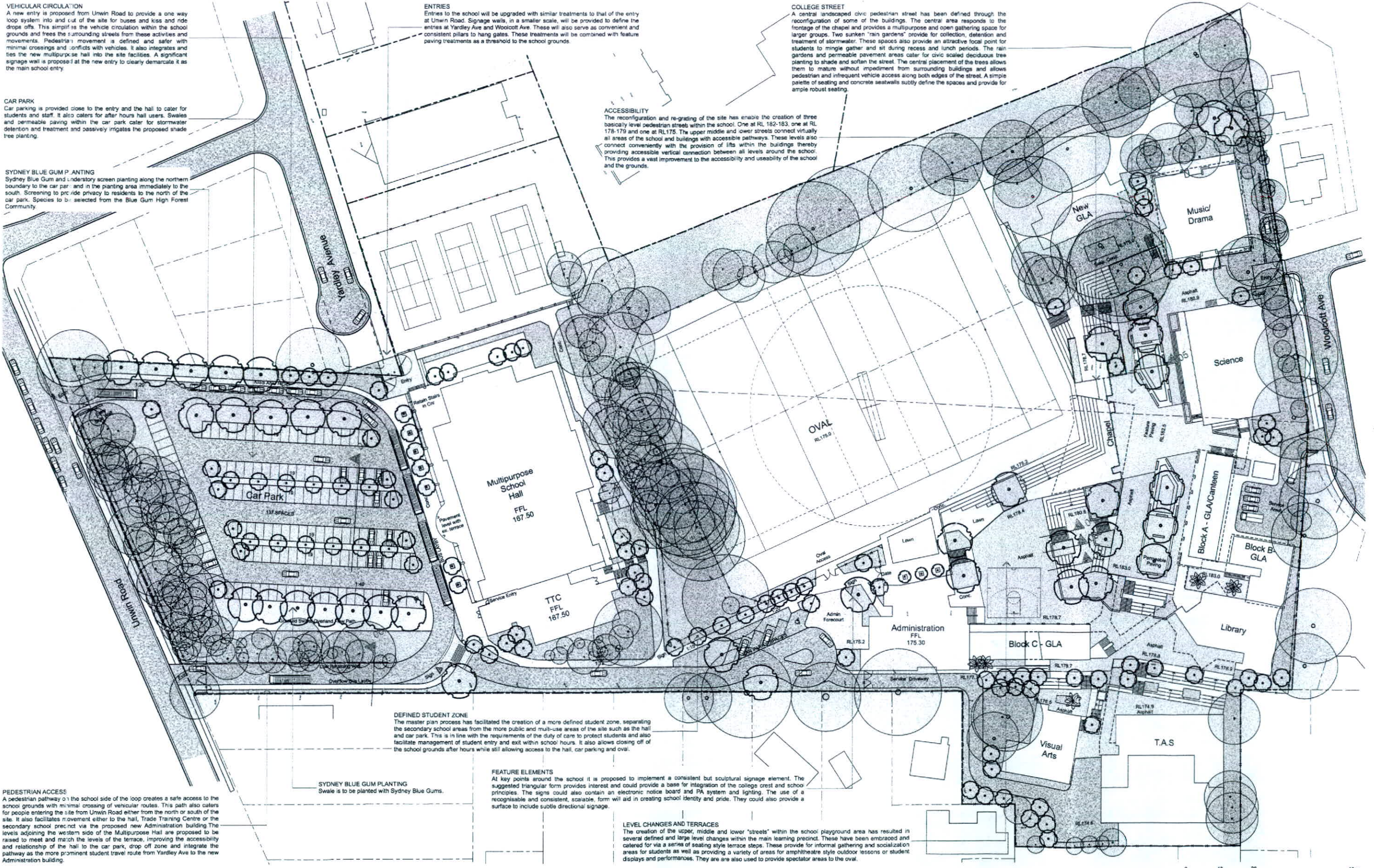
Entries to the school will be upgraded with similar treatments to that of the entry at Unwin Road. Signage walls, in a smaller scale, will be provided to define the entries at Yardley Ave and Woolcott Ave. These will also serve as convenient and consistent pillars to hang gates. These treatments will be combined with feature paving treatments as a threshold to the school grounds.

# ACCESSIBILITY

The reconfiguration and re-grading of the site has enabled the creation of three basically level pedestrian streets within the school. One at RL 182-183, one at RL 178-179 and one at RL 175. The upper middle and lower streets connect virtually all areas of the school and buildings with accessible pathways. These levels also connect conveniently with the provision of lifts within the buildings thereby providing accessible vertical connection between all levels around the school. This provides a vast improvement to the accessibility and usability of the school and the grounds.

# COLLEGE STREET

A central landscaped civic pedestrian street has been defined through the reconfiguration of some of the buildings. The central area responds to the frontage of the chapel and provides a multipurpose and open gathering space for larger groups. Two sunken "rain gardens" provide for collection, detention and treatment of stormwater. These spaces also provide an attractive focal point for students to mingle and sit during recess and lunch periods. The rain gardens and permeable pavement areas cater for civic scaled deciduous tree planting to shade and soften the street. The central placement of the trees allows them to mature without impediment from surrounding buildings and allows pedestrian and infrequent vehicle access along both edges of the street. A simple palette of seating and concrete seatwalls subtly define the spaces and provide for ample robust seating.



# PEDESTRIAN ACCESS

A pedestrian pathway on the school side of the loop creates a safe access to the school grounds with minimal crossing of vehicular routes. This path also caters for people entering the site from Unwin Road either from the north or south of the site. It also facilitates movement either to the hall, Trade Training Centre or the secondary school precinct via the proposed new Administration building. The levels adjoining the western side of the Multipurpose Hall are proposed to be raised to meet and match the levels of the terrace, improving the accessibility and relationship of the hall to the car park, drop off zone and integrate the pathway as the more prominent student travel route from Yardley Ave to the new Administration building.

# DEFINED STUDENT ZONE

The master plan process has facilitated the creation of a more defined student zone, separating the secondary school areas from the more public and multi-use areas of the site such as the hall and car park. This is in line with the requirements of the duty of care to protect students and also facilitate management of student entry and exit within school hours. It also allows closing off of the school grounds after hours while still allowing access to the hall, car parking and oval.

# SYDNEY BLUE GUM PLANTING

Swale to be planted with Sydney Blue Gums.

# FEATURE ELEMENTS

At key points around the school it is proposed to implement a consistent but sculptural signage element. The suggested triangular form provides interest and could provide a base for integration of the college crest and school principles. The signs could also contain an electronic notice board and PA system and lighting. The use of a recognisable and consistent, scalable, form will aid in creating school identity and pride. They could also provide a surface to include subtle directional signage.

# LEVEL CHANGES AND TERRACES

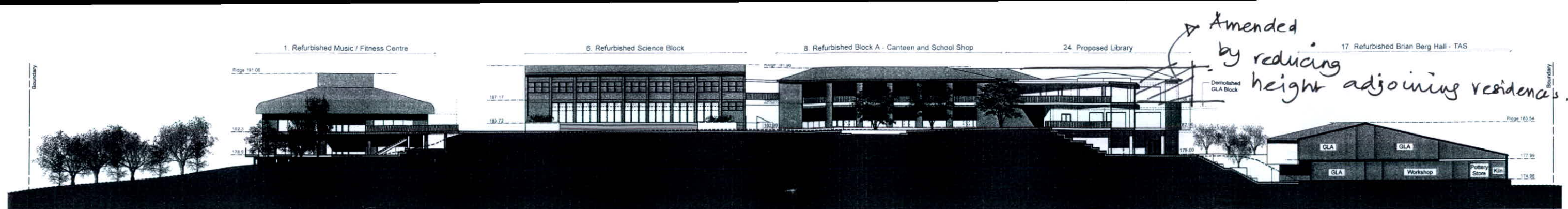
The creation of the upper, middle and lower "streets" within the school playground area has resulted in several defined and large level changes within the main learning precinct. These have been embraced and catered for via a series of seating style terrace steps. These provide for informal gathering and socialization areas for students as well as providing a variety of areas for amphitheatre style outdoor lessons or student displays and performances. They are also used to provide spectator areas to the oval.

# LEGEND

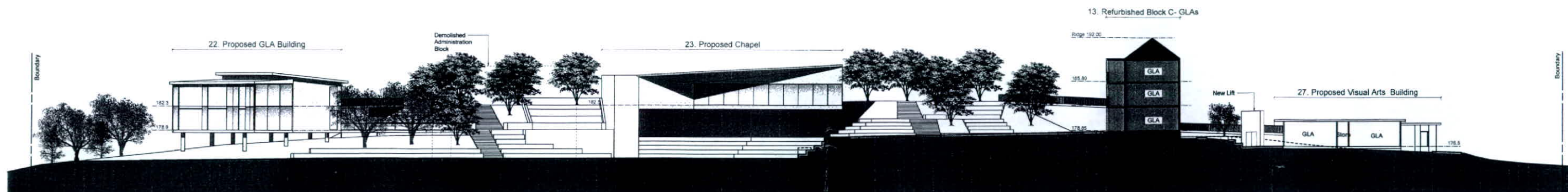
Site Boundary	Existing Tree Retained	Asphalt Pavement Pedestrian	Roadways/ Vehicular Pavement
Proposed Fencing	Proposed Trees	Feature Unit Paving	Permeable Pavement - Carpark
Lawn / Turf Grass	Native / Reveg. Planting	Amenity Paving / Gardens	Concrete Pavements/ Terraces
	Feature Walling / Signs	WSUD / Rain Garden / Swales	Concrete Decks (Suspended)

B	Amended GLA & visual arts layout, turning circle in Yardley Ave reduced and additional trees retained.	RWS	20/6/12
A	For Council Submission	RWS	16/4/12
REVISION	DESCRIPTION	CHKD	DATE

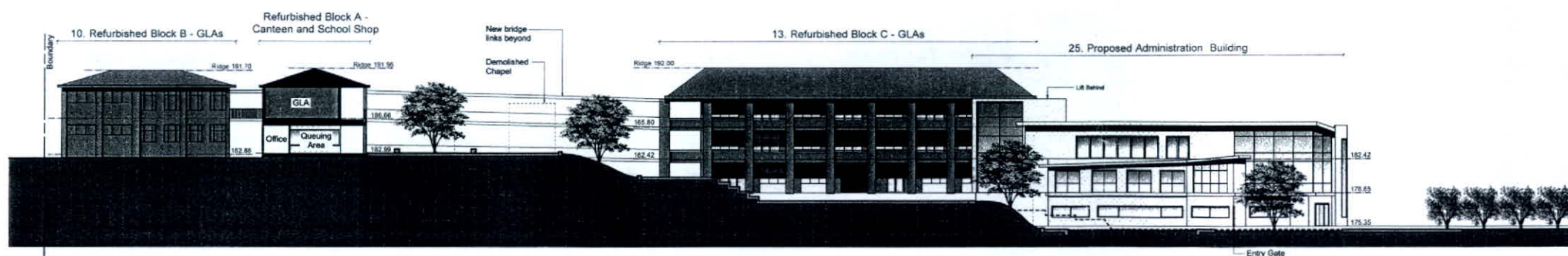




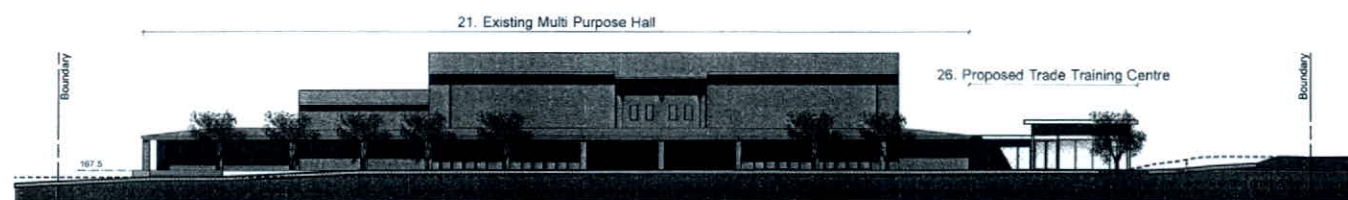
01 Section



02 Section



03 Section



04 Section





(Southern Boundary Shown Only)



(Southern Boundary Shown Only)

